

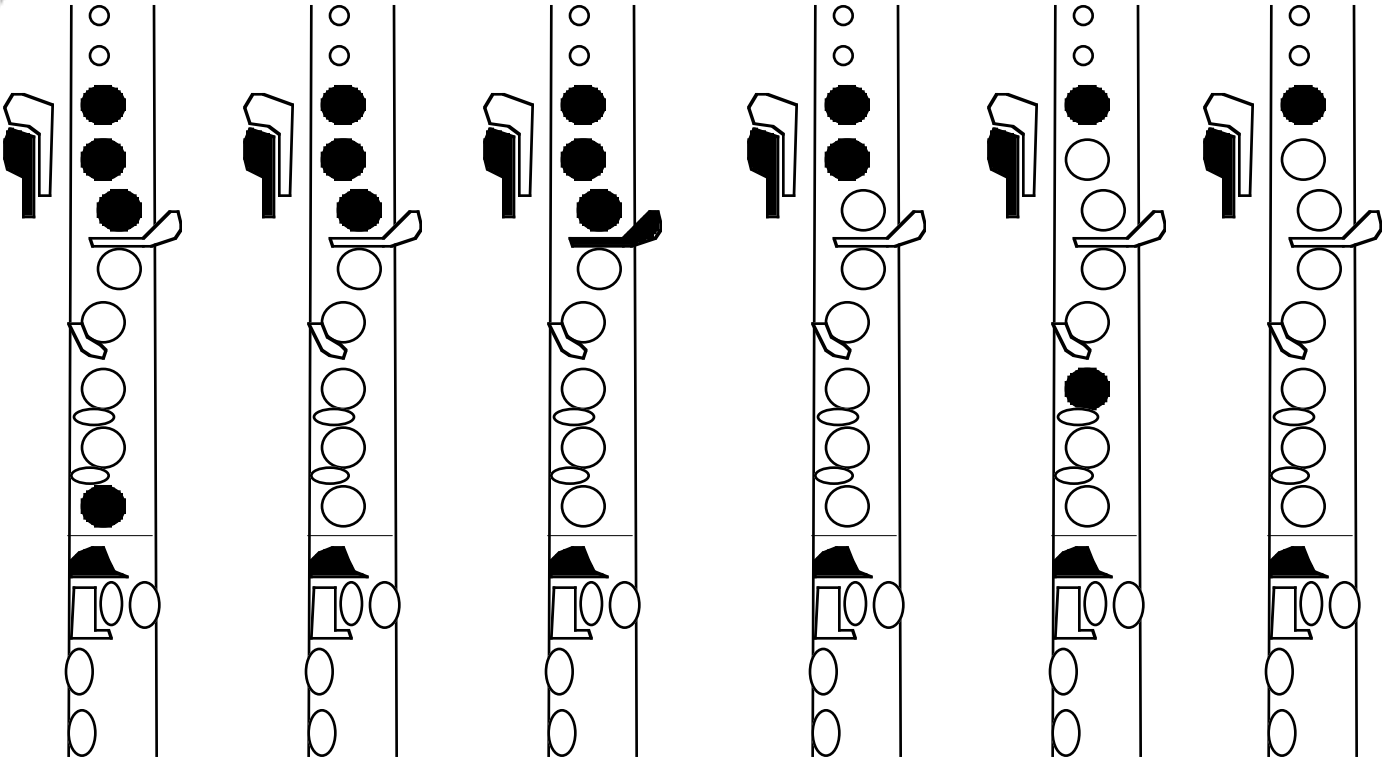
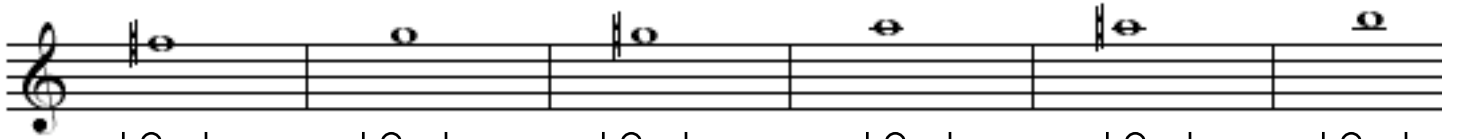
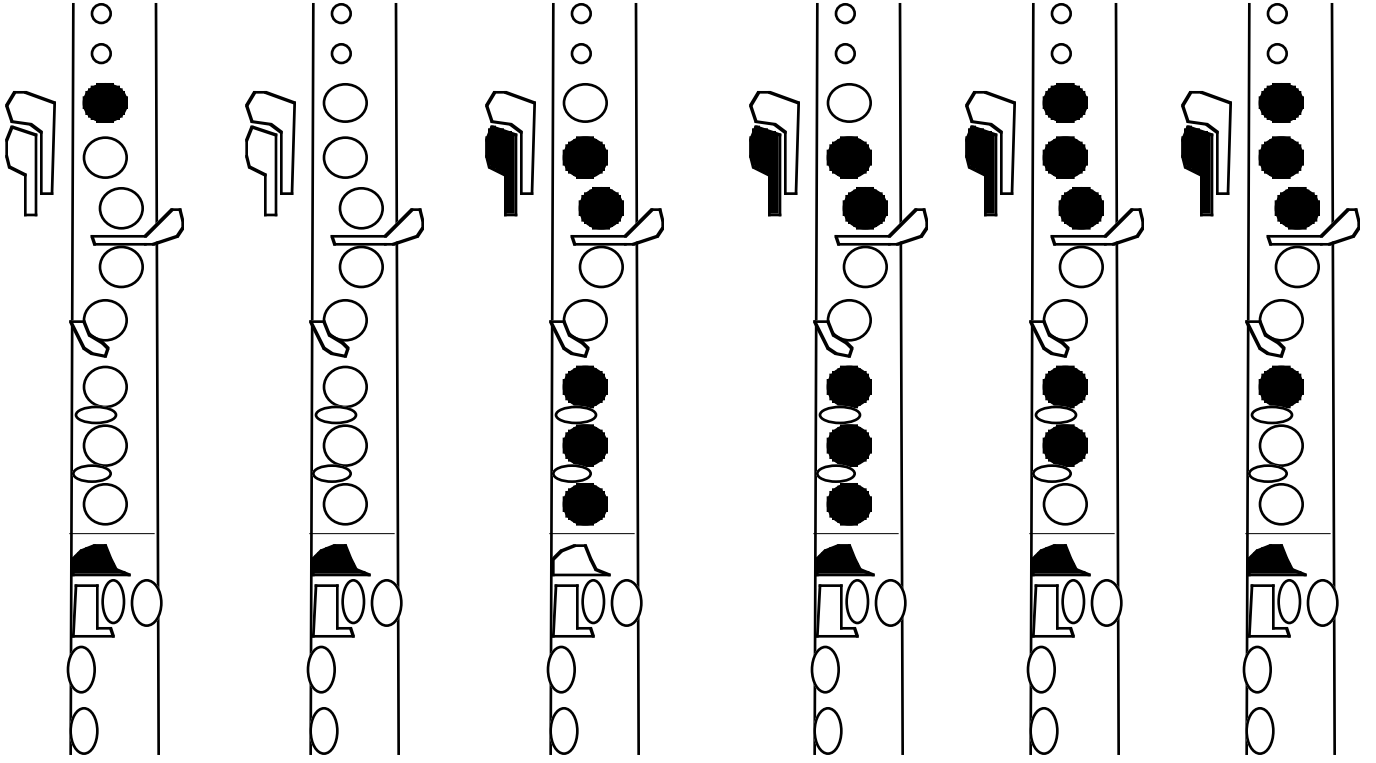
Flute Fingering Chart (standard)

The first staff shows a musical scale starting on middle C (C4). The notes are C4, D4, E4, F4, G4, and A4. Below each note is a fingering diagram for the right hand. The diagrams show the placement of fingers on the keys: index, middle, ring, and pinky. The thumb is shown in its resting position. The diagrams are as follows:

- C4: Index, middle, ring, pinky down.
- D4: Index, middle, ring, pinky down.
- E4: Index, middle, ring, pinky down.
- F4: Index, middle, ring, pinky down.
- G4: Index, middle, ring, pinky down.
- A4: Index, middle, ring, pinky down.

The second staff shows a musical scale starting on B4. The notes are B4, C5, D5, E5, F5, and G5. Below each note is a fingering diagram for the right hand. The diagrams show the placement of fingers on the keys: index, middle, ring, and pinky. The thumb is shown in its resting position. The diagrams are as follows:

- B4: Index, middle, ring, pinky down.
- C5: Index, middle, ring, pinky down.
- D5: Index, middle, ring, pinky down.
- E5: Index, middle, ring, pinky down.
- F5: Index, middle, ring, pinky down.
- G5: Index, middle, ring, pinky down.



Musical notation for the first system. It consists of a treble clef followed by six measures. Above each measure is a rhythmic marking: a quarter note, a quarter note with a bar line, a half note, a half note with a bar line, a quarter note, and a quarter note with a bar line. Below the treble clef are six musical staves. Each staff contains notes and rests corresponding to the rhythmic markings above. The notes are represented by circles, some filled (black) and some empty (white).

Musical notation for the second system. It consists of a treble clef followed by seven measures. Above each measure is a rhythmic marking: a quarter note with a bar line, a quarter note, a quarter note with a bar line, a quarter note with a bar line, a quarter note with a bar line, a quarter note, and a quarter note with a bar line. Below the treble clef are seven musical staves. Each staff contains notes and rests corresponding to the rhythmic markings above. The notes are represented by circles, some filled (black) and some empty (white). The second staff in this system has a grey-shaded note. An annotation "(opt!)" with an arrow points to this note. Another annotation "(Gizmo key or...)" with an arrow points to a note in the seventh staff.